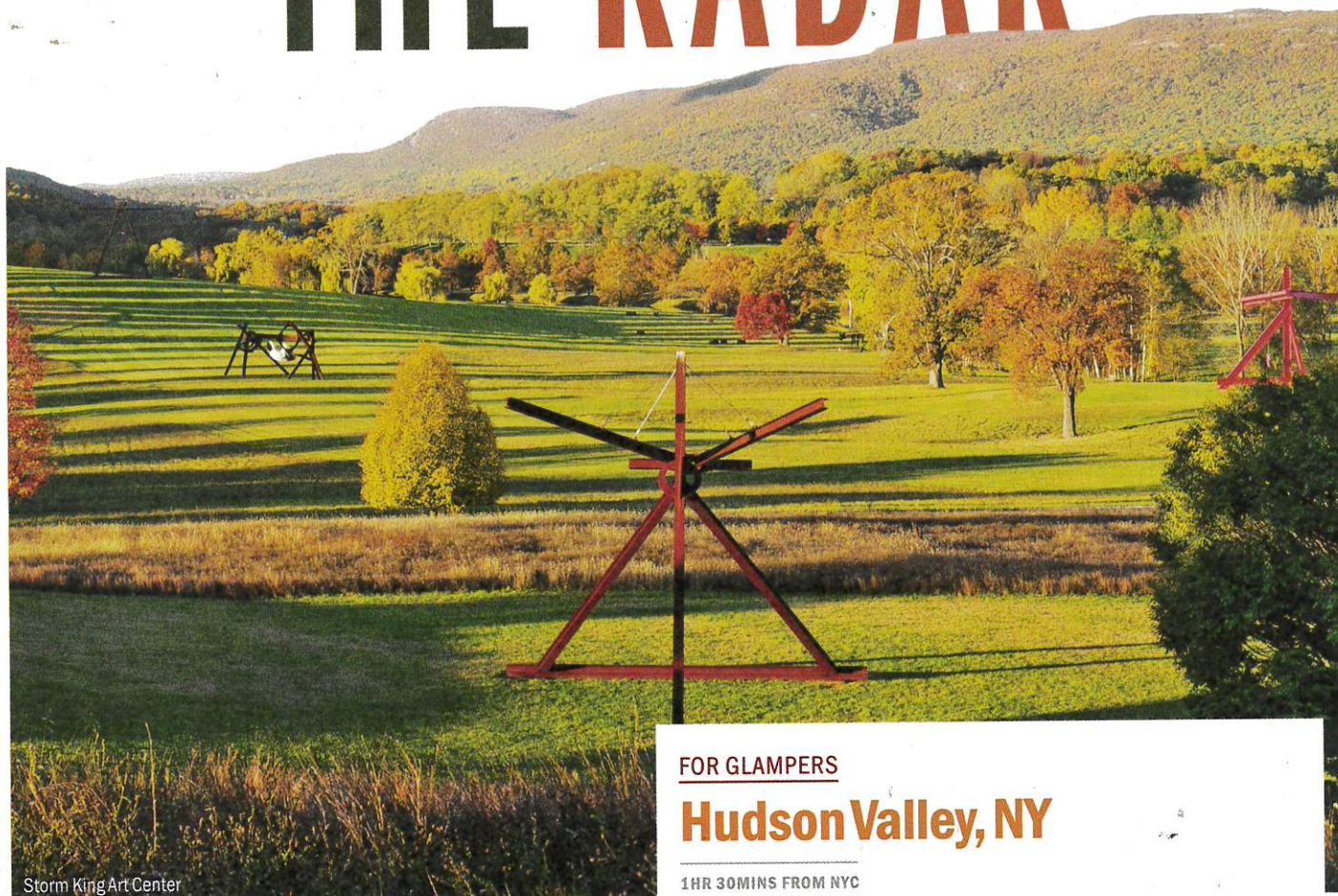


FALL OFF THE RADAR



Storm King Art Center

FOR GLAMPERS

Hudson Valley, NY

1HR 30MINS FROM NYC

Something tells us glampers dig the Instagram. Maybe it's the constant postings. Whatever the reason, more than enough 'Gram gold is at **Storm King Art Center** (1 Museum Rd, New Windsor, NY; 845-534-3115, stormking.org), a bucket-list site that has striking contemporary sculptures amid 500 acres of resplendent green, yellow and brown foliage. Afterward, move between art and antiques on Warren Street in Hudson, where NYC expats helm stylish galleries and boutiques. Then brunch at the oh-so-pretty **Rivertown Lodge** (731 Warren St, Hudson; 518-512-0954, rivertownlodge.com), a hip hotel for design lovers, which recently opened a new tavern that serves Dutch baby pancakes. Finally: Glamp, dammit. Book a tent at the just-opened **Collective Hudson Valley** (129 Ostrander Rd, Hudson; 970-445-2033, collectiveretreats.com; \$500-\$700/night) on an organic farm. Its luxe low-pitched tents require no setup and are stocked with rustic furnishings and a generous dollop of ritz—like electricity, private bathrooms and 1,500-thread-count sheets on which to count sheep.

Your great weekend escape awaits, whether you're craving soul-warming eats, small-town charm, old-timey luxury or lots and lots of pretty leaves.
By Keith Flanagan

Fall getaways



Field Guide

FOR SERIOUS LEAF PEEPERS

Stowe, VT

5 HRS 10 MINS FROM NYC

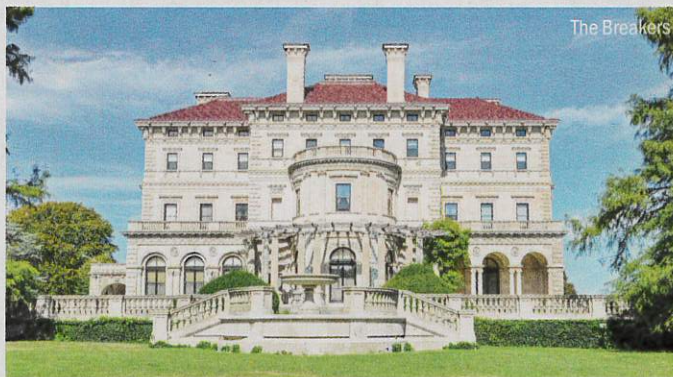
When it comes to fall foliage, Vermont is king. The state has the country's highest percentage of maple trees, and no better retreat exists for scoring that color-bursting seasonal photo. That's especially true in Stowe, a valley town in Northern Vermont. Marvel at rust-tinged leaves from a car (foliage driving routes are an actual thing here), a gondola at Stowe Mountain Resort (5781 Mountain Rd; 888-253-4849, stowe.com) or on foot: The three-mile **Stowe Pinnacle Trail**—four miles southeast of the town—is one of many climbs with breathtaking views. Follow the state's foliage tracker (vermont.com/foliage.cfm) to ensure that leaves are at peak awesomeness when you go. After hiking, you deserve a bit of shut-eye. Stowe's hallmark hotel might be the Trapp Family Lodge (yes, it was opened by that do-re-mi family you're thinking of), but for a more upscale option, tuck into the recently opened **Field Guide** (433 Mountain Rd; 802-253-8088, fieldguidestowe.com; \$189–\$639/night), which has a Scandinavian feel as well as fire pits and a complimentary breakfast basket delivered each morning.

FOR HISTORY NERDS

Newport, RI

3 HRS 10 MINS FROM NYC

It's in the nation's smallest state, but Newport is big on history. While summers attract the blazers-and-boat-shoes set, autumn has calmer crowds and a chillier coast. Stalk the **Cliff Walk** (cliffwalk.com), a three-and-a-half-mile public trail along the shore's famous Gilded Age mansions. **The Breakers** (44 Ochre Point Ave; 401-847-1000, newportmansions.org) is the Vanderbilts' former abode, long popular for tours that demonstrate just how gilded it gets. (Check out the gold-paneled library.) Railway lovers can pedal along Narragansett Bay, thanks to tour company **Rail Explorers** (1 Alexander Rd; 877-833-8588, railexplorers.net), which has two- and four-seat bikes that glide on old train tracks. After breaking a sweat, saunter back to **The White Horse Tavern** (26 Marlborough St; 401-849-3600, whitehorsenewport.com), one of the country's oldest restaurants, for bouillabaisse and swordfish in a high-end setting (collars are required). Then stay at the slick **Gurney's Newport Resort & Marina** (1 Goat Island; 401-849-2600, gurneysresorts.com; \$120–\$824/night), modern digs just a brisk walk from the cobblestone streets of downtown Newport.



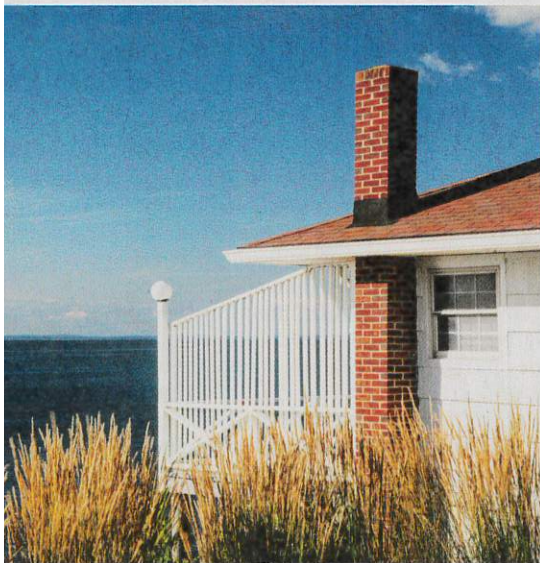
The Breakers

FOR DRINKERS AND NIBBLERS

North Fork, L.I.

3 HRS FROM NYC

South Fork is so last season. Instead, skip it for Long Island's North Fork this fall, where the bucolic coast is just warming up. Anchor yourself in Greenport, a historic but hip farm-flanked whaling town. Sample the area's robust wine scene at the wind-powered, 24-acre **Kontokosta Winery** (825 North Rd, Greenport; 631-477-6977, kontokostawinery.com; \$35) on a 45-minute tour. Later head to **Widow's Hole Oysters** (307 Flint St, Greenport; 631-477-3442, widowsholeoysters.com; email mike@widowsholeoysters.com for details) to check out its underwater oyster farm. Wayfaring Manhattan chefs have long relished the area's top-notch farm stands—such as **Sang Lee Farms** (25180 Rte 48, Peconic; 631-734-7001, sangleafarms.com), a classic pit stop for in-season organic produce like carrots, eggplants and gourds—but lately some chefs have planted roots in the area. Galen Zamorra, the chef and owner of Greenwich Village's seasoned Mas (farmhouse), opened **The Halyard**, a buzzy restaurant inside the renewed **Sound View** (58775 Rte 48, Greenport; 631-477-1910, soundviewgreenport.com; \$226–\$595/night), a nostalgic remake of a former midcentury motel that brings cabinlike interiors to beachfront rooms—all with views of the tranquil Long Island Sound.



DISCOVER!

Find more fall-trip ideas at timeout.com/nyfallgetaways.

PHOTOGRAPHS (CLOCKWISE FROM TOP LEFT): COURTESY RAIL EXPLORERS; DAVID AND BLONNIE; COURTESY SOUND VIEW